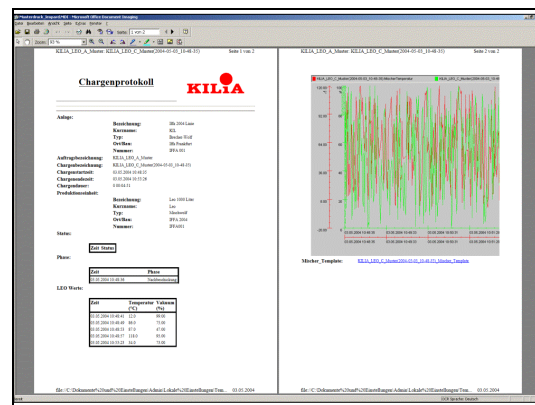
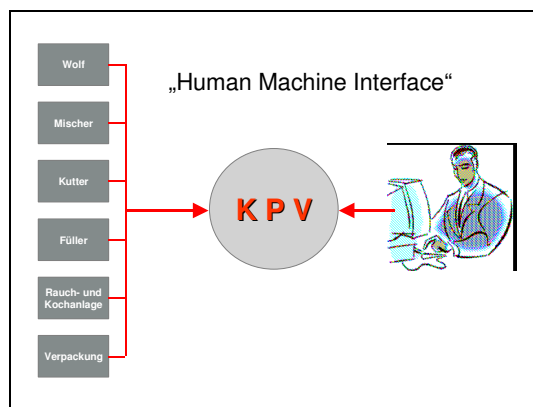


Simply the best from Germany



KILIA Process Visualisation (KPV Executive)

According to EU regulation 178 / 2002



The **KPV Executive** is the top version of the **KILIA Process Visualisation** and suitable for small to large companies. It allows to visualise and document production processes relating to batch and operator not only for single machines (e.g. bowl cutter, mixer or mixer-grinder), but also for complete production lines. Therefore, it is an indispensable component for batch traceability as prescribed by EU regulation 178/2002.

The following process data are documented:

- batch no.
- operator no.
- date
- time
- time length of batch processing
- temperature pattern
- mixing respective cutting speeds.

Via an USB interface, these data can be transferred onto a standard office-PC (Excel format), e.g. in the office of the production manager (data line from switch cabinet required), where they can easily be analysed/ documented with a preset mask (Excel format). Additionally, there is the possibility to link, visualise and document process data also from other processing machines (programming according to time and material basis).

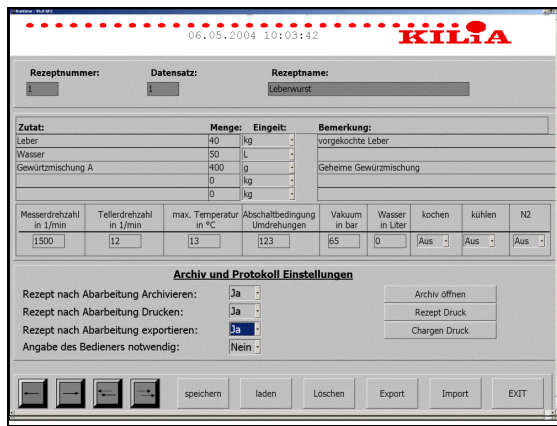
KILIA Fleischerei- und Spezial-
Maschinen-Fabrik GmbH
Christianstraße 160-164
24536 Neumünster • Germany
Tel +49 (0) 4321 3092 00
Fax +49 (0) 4321 3092 88
e-mail kilia@kilia.com
<http://www.kilia.com>

DIN EN ISO 9001
zertifiziert



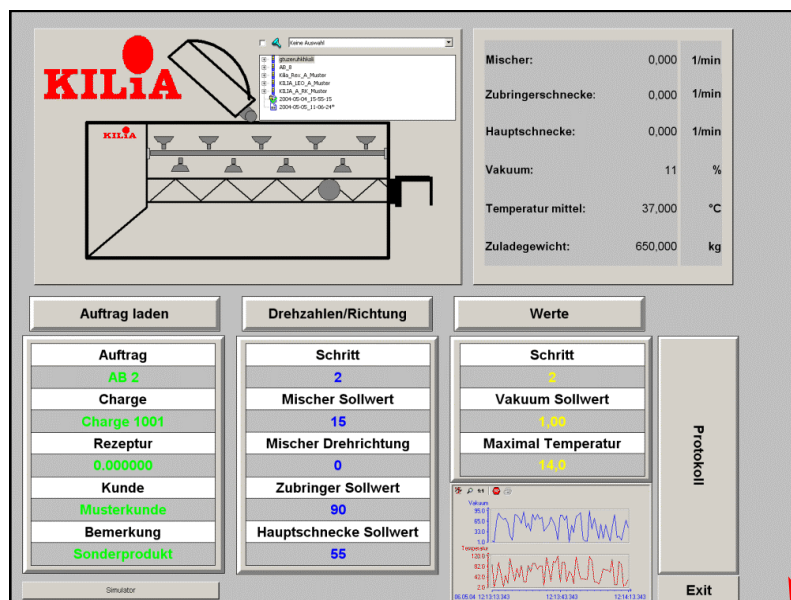
Zertifikat Nr.
CERT-09475-2000-AQ-ESN-TGA

Additionally, the **KPIA Basic** contains a **clear text recipe manager**, that can be programmed comfortably with a preset mask from an office-PC or with a separate key board on the machine. On a separate display, the overview menu then shows product name (the recipe) and its number (e.g. recipe no. 1 = corned beef). In the corresponding submenu, the recipe composition is shown in the form of detailed text modules. After the recipe selection follows the “automatic” run of processing steps according to recipe and set text.



On an additional display of the machine, technical instructions and information can be recalled through the enhanced **maintenance and inspection module**.

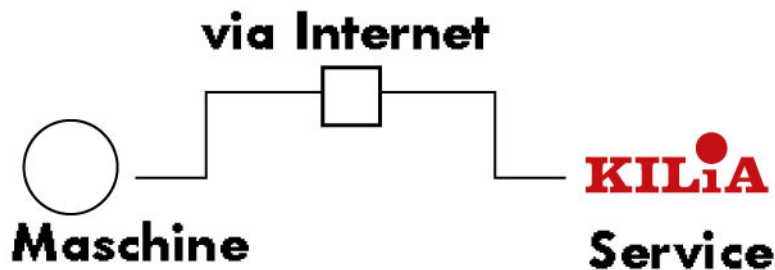
With the optional available **KILIA project manager** with preset masks it is possible to plan production cycles and send the respective batch numbers into the machine. This is an ideal addition to the recipe manager.



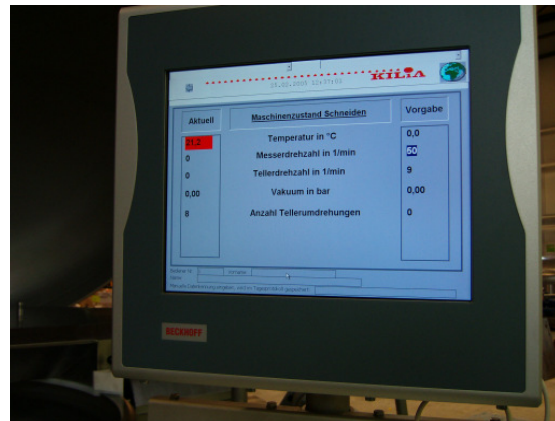
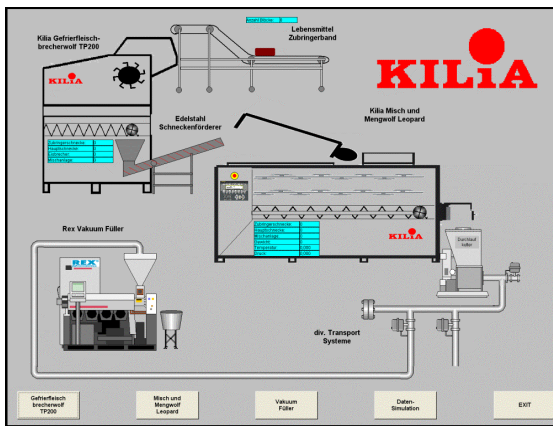
Simply the best from Germany



Also optionally available is a **camera**, which does not only allow the personnel, which is not working near the machine, to have a continuous overview of the production processes, but also the KILIA service technicians, to have a direct insight onto the actual machine state whenever required (via internet connection within the scope of the **remote diagnosis** modules).



Within the scope of the **software support contract**, updates of the software are regularly installed online.



The **KILIA Process Visualisation** software can basically be installed for all new machines built from 2007 onwards. The software can also be installed into older models, as long as they are already equipped with an SPS-steering. For this it might be necessary to upgrade the key pad respectively the SPS. Thus, principally the possibility exists, to visualise existing machines without having to invest considerably into new machines.

KILIA Fleischerei- und Spezial-Maschinen-Fabrik GmbH
Christianstraße 160-164
24536 Neumünster • Germany
Tel +49 (0) 4321 3092 00
Fax +49 (0) 4321 3092 88
e-mail kilia@kilia.com
http://www.kilia.com

DIN EN ISO 9001
zertifiziert



Zertifikat Nr.
CERT-09475-2000-AQ-ESN-TGA

